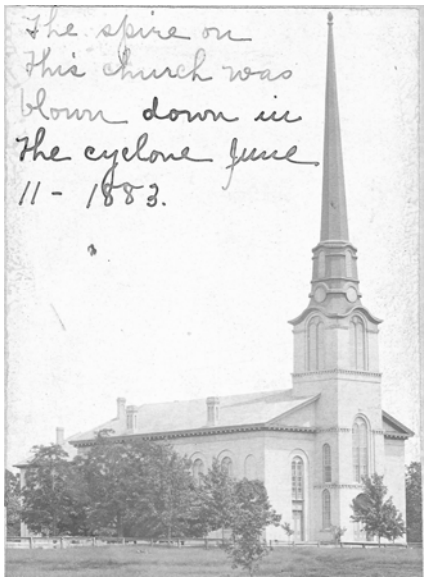




# Confluence

## *Churches of Beloit*

From its founding in 1836, going to church has been an important part of life in Beloit and the establishment of churches mirrored the religious backgrounds of the people who settled it.



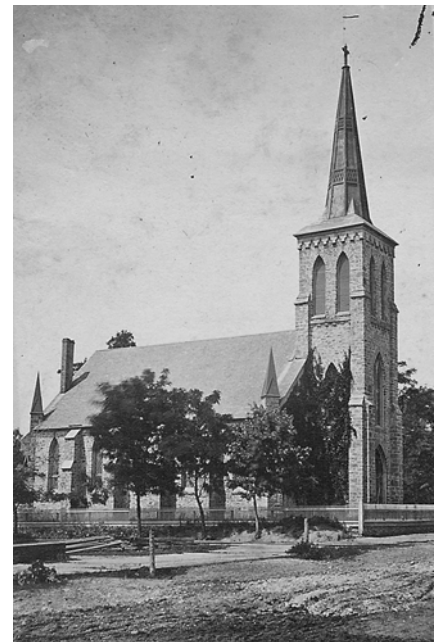
First Congregational Church, 1886

Among the first to settle churches here were New England Yankees who brought Congregational (1838), Methodist (1838), Baptist (1841), Episcopal (1841) and Presbyterian (1849) traditions to southern Wisconsin. The earliest Lutheran traditions were Norwegian (1844), followed by Swedish (1867) and German Lutheran (1874). A Catholic church was established before the second decade of Beloit ended. Since 1841 Beloit Catholics were a mission attached to the Janesville parish. In the 1880's Bethel African Methodist Episcopal (1881) and the Church of Christ Scientist (1889) were formed. A non denominational Gridley Chapel on Strong Avenue began worship services in 1899 and affiliated with the Congregational Church in 1909.

Reflecting the different immigrant populations within the first twenty years of the twentieth century, an English Evangelical Lutheran church formed in 1905; St. Paul's Catholic church was established in 1913 to minister to Italian immigrants; and a Seventh Day Adventist church formed in 1917-1918.

The Second Methodist Episcopal church (1917) served a "large colored congregation" in the words of the 1936 Book of Beloit. It first worshipped in the Booth and G.A.R. halls until the building on Pleasant Street was dedicated in 1935. In the 1960's the congregation relocated to Shore Drive and became Wesley Christian Methodist Episcopal church.

In 1908 St. Jude's Catholic church was established on the west side of Beloit and St. Peter's Catholic church in South Beloit was formed in 1909. A West Side Presbyterian church was organized in 1903. Seventy years ago there were 35 churches of all denominations with an average attending membership of more than 10,000 from a population at that time of 30,000. The Book of Beloit (1936 publication) also lists these other churches: Central Christian, Congregation B'Nai Abraham, Wesleyan Methodist, Reorganized Church of Christ, New Zion Baptist, Israel of God's church, Gospel Tabernacle, Free Methodist, Foursquare Gospel Tabernacle, Everybody's Tabernacle, Emanuel Second Baptist, Church of God in Christ and Bethel A.M.E. church.



St. Paul's Episcopal Church

Today there are 65 churches in Beloit and South Beloit and they stand as testament to the continued importance religion has in the Greater Beloit Area.

*Article submitted by Carolyn Hansen*

## Gifts to the Society

The Society received promotional clocks, scores of blue prints of buildings 1971 through the 1980's.

### Beloit Historical Society

*Founded 1910*

#### Officers

President Cathy Piazza  
 Vice President Sue Drevdahl  
 Treasurer Maggie Janke  
 Secretary William Bolgrien

#### Board of Directors

David Collins Levi Cousin  
 Deb DeHart Mary Frey  
 Maggie Janke Martin Kades  
 Steve Kinkade Ron Klein  
 Craig Mellem

#### Lincoln Center Staff:

Executive Director Paul Kerr  
 Custodian Fred Bull

Newsletter edited by Jen Scott  
 Other contributors to this issue:  
 Joanne Ciulla, Cathy Piazza,  
 Carolyn Hansen and Paul Kerr

**Date of Next Board Meeting:**  
 November 15, 2007, 4 p.m.

**Executive Committee Meeting:**  
 November 8, 2007, noon

*No December Meetings*

The Newsletter, *Confluence*, is published quarterly for the membership of the Beloit Historical Society to inform readers of Society activities as well as educate them on the history of Beloit. The Beloit Historical Society manages two sites, Lincoln Center Museum with main offices at 845 Hackett St. and Hanchett-Bartlett Homestead, 2149 St. Lawrence Ave. For further information please call (608) 365-7835 or e-mail us at Pkerr@beloithistoricalsociety.com. Or see our new website which can be found on the web at beloithistoricalsociety.com.

# Ads of Old

Excerpted from Howdy Neighbor-Welcome to Beloit, a 1957 publication distributed by the Greater Beloit Association of Commerce to new residents.

*Howdy Neighbor-*

**WELCOME TO BELOIT**

*Let's get better acquainted-*

*Howdy Neighbor!*

ANYTHING and EVERYTHING for PHOTOGRAPHY

KODAK  
 \*  
 ANSCO  
 \*  
 BELL & HOWELL  
 \*  
 ZEISS & IKON  
 \*  
 VOIGTLANDER  
 \*  
 GRAFLEX  
 \*  
 WOLLENSAK  
 \*  
 POLAROID

HOME OF THE ALBUM STYLE PRINTS  
 BELOIT'S FINEST PHOTO FINISHING

**BELOIT PHOTO SHOP**  
 Photo Supplies - Greeting Cards  
 166 W. GRAND EM. 2-6055  
 "FEATURING 24 HOUR FILM DEVELOPING"

SECURITY and PROTECTION  
 are yours forever WHEN YOU BUY

**Columbia "true fit"**  
 DIAMOND RINGS

TELEVISION...  
 and RADIO

SALES - SERVICE  
 ANTENNAS  
 24 HOUR SERVICE ON ALL MAKES

Over 20 years in Electronics

AUTOMOBILE RADIOS REPAIRED

Dealer for SENTINEL TELEVISION and RADIOS also DELCO ELECTRIC Authorized Service

TV REPAIR SERVICE

We Are As Near As Your Phone

**KLAUSNER RADIO & TV**  
 1531 Madison Road EM. 5-6519

BILL BRYDEN extends his personal welcome to the newcomers in the Beloit area, and invites you to call upon BRYDEN MOTORS for any automotive need.

STOP BY AND GET ACQUAINTED

**BRYDEN MOTORS**  
 "The Home of the Forward Look!"  
 DE SOTO - PLYMOUTH  
 548 Broad Street Tel. EM. 5-7749

**BELOIT'S friendly MOVIE THEATRES**

**WELCOME YOU!**

YOUR FINEST ENTERTAINMENT

Whatever your taste in entertainment, a program you're sure to enjoy is showing at one of Beloit's Theatres.

The guest coupon inside is your invitation to relaxation. Please use it soon and get to know us . . . because we're anxious to meet you.

*C. H. Salmons*  
 Resident Manager

Be Entertained The MOVIE Way!

**MAJESTIC**  
 420 Broad Street - Phone Emerson 2-1069 - Matinees Daily at 1:30 p.m. - 1st Run Pictures

**ELLIS**  
 630 Fourth St. - Phone Emerson 2-3021 Open Friday 6:00 P.M. Week Ends open at 1:00 P.M.

**STATE**  
 320 State St. - Phone Emerson 2-3021 Open Friday 6:00 P.M. 1 P.M. Every Saturday and Sunday

**MID-CITY**  
 Highway 51 at Townline Rd. Season from Mid. - April to Mid. - October Open Nightly at 6:30 p.m. Featuring both First and Second Run Hits

Welcome To BELOIT

May your new home bring you Happiness and Prosperity

**M. J. HANSEN**  
 FUNERAL SERVICE

Serving Beloit over 17 Years

Dial Emerson 2-6044 602 E. GRAND

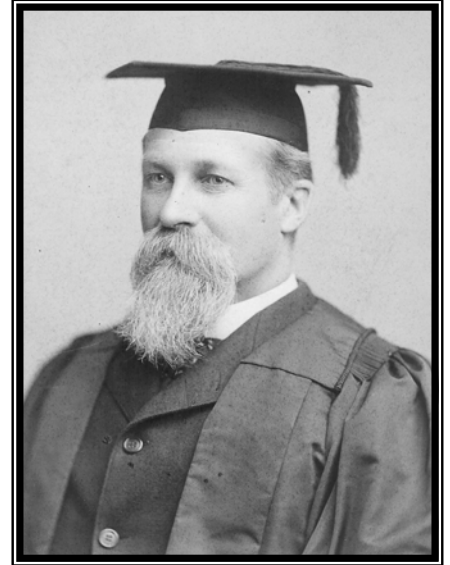
"Mommie Says A Fine Picture is a Portrait by Riemer"

Riemer Studio  
 PHONE EM. 2-7078  
 416 E. GRAND AVE.

## Profile: Thomas Chrowder Chamberlin

Beloit has produced some great people throughout its long history. In this issue we offer a new segment entitled "Profile" as means of taking a brief look at some of these individuals. With this publication we highlight one of the most outstanding scientists Beloit has produced. In a thumb-nail sketch, we take a look at Thomas Chrowder Chamberlin.

Thomas C. Chamberlin was born 25 September 1843 and died 15 November 1928. He was a renowned, internationally recognized geologist and educator who graduated from Beloit College in 1866. He later returned to Beloit College and taught geology, zoology, and botany there from 1873-1882. During this time he served as State Geologist for Wisconsin. He went on to become a professor of Geology at Columbia University from 1885-1887. In 1887, he was called on to be President of the University of Wisconsin, where he stayed until 1892. At that time, he left to found and head the Department of Geology at the new University of Chicago. He ended his esteemed career there in 1919.



Just a few of Chamberlin's accomplishments and contributions:

- He founded the *Journal of Geology* in 1893 and served as its editor for some time
- Was geologist of the 1904 relief expedition to the North Pole for explorer Robert Peary
- Became the consulting geologist for the United States Geological Survey
- Wrote many articles and books. Of the latter, two stand out: *Origin of the Earth*, published in 1916 and *The Two Solar Families: The Sun's Children*, published in 1928
- Developed the theory that postulated gaseous materials solidified forming the planet earth-Planetesimal Hypothesis
- Buildings on the Beloit College and UW-Madison campuses bear his name, as do craters on the moon and Mars

It was said of Chamberlin that his concept of Geology embraced the solar system and touched the stars. Thomas C. Chamberlin maintained that rocks were not dead, that they were meant for scientists and students to study as "Living assemblages of energy organized according to the laws of physics and chemistry."

## Past Events

**Heritage Days** this past 8 September was celebrated at the Hanchett-Bartlett Homestead. Tours and appraisals were given and the turn out was good. We thank our wonderful volunteers who gave tours and furnished refreshments. Special thanks to Auctioneer Rich Ranft who donated his appraisal services for the afternoon. Other thank yous go to the Beloit Garden Lovers Club and to the Hanchett-Bartlett Committee with special attention to Cathy Piazza, Lois Roen, Jeanette and Roger Goecks, Cathy Schafman, Amy Couillard, Sue Drevdahl, Ron Klein, Caitlin Klein and Lois MacGowan.

**The City Hall of Fame** was held the following week, on 16 September, and was attended by 80 people. A few attendees came from as far away as Maryland to see their loved one inducted into the Society's Hall of Fame. Those inducted were Ruby Bond, Martin Krueger, Bertram Lans, George Stankewitz and Harold Stauffacher. Our thanks to the hard working committee members Bill Behling, Bill Bolgrien, Jerry Elliott, Herb Christiansen, Sarajane Crave, Barbara Hickman, Walter Knight, Tom O'Brien, Frank Marsden and Wayne Showers.

On October 20th the Society held its **12th Annual Gala Auction** at Roger Bryden's showroom. Over 100 guests attended and bid on a variety of items, making this Gala Auction one of the top three in its history. The Society made a net profit of close to \$23,000. It is with sincere gratitude we thank this year's committee members for their diligence and talent: Tom and Teri Barnes, Sharon Kopp, Jackie Landers, Marcy Olsen, Carla Swain, Tim Weeden, Rick West, Nicki Yoss, Tammy Hess, Naomi Levin, Rich and Pat Ranft of the Beloit Auction Service and staff of the First American Credit Union.

## UPCOMING EVENTS



**Nov. 30 - Dec. 1**—**Holiday with the Historical Society**, See this issue's insert for more information.

Contact Beloit Historical Society for further information (608) 365-7835

### **Membership News**

Please make a special effort to thank and welcome our new members. The following have joined the Beloit Historical Society since the last newsletter:

Sharon Bartholomew  
Sharon & Harvey Kopp  
Nellie Laughlin

### **Help Wanted**

**Researcher Volunteer to assist  
with incoming questions**

### **Wish List**

- ◆ Antique/Antique-looking lamps for Hanchett-Bartlett Homestead
- ◆ Gas-powered Edger

**Confluence**  
Beloit Historical Society  
845 Hackett St.  
Beloit WI 53511

Address Service Requested

The Vision of the Beloit Historical Society is to make history a focal point of community pride and to serve as a constant reminder to the community of its great and diverse heritage.

Visit our web site at  
[beloithistoricalsociety.com](http://beloithistoricalsociety.com)

Non Profit Org.  
U.S. Postage  
PAID  
Beloit, WI  
Permit No. 87